

# 石門 SHIMEN

## New Taipei City Shimen Guide Map

English



新北市 石門區公所  
 Address: No. 66, Zhongshan Rd., Jianlu Village, Shimen District, New Taipei City  
 Phone: 02-2638-1721  
 Website: <http://www.shimen.ntpc.gov.tw>  
 Sep. 2023 Published

### Coastal Line Enjoy the Shimmering Ocean and Bright Blue Sky

**1 Linshan Cape Recreation Area**  
 Xia Yuanheng, Demao Village, Shimen District (at the 23-km mark of Provincial Highway No. 2)

Home to Taiwan's largest wind-faceted stone landscape formed from the volcanic relic Andesite. After centuries of erosion by ocean waves and strong, sandy winds, rocks and boulders of peculiar shapes have been sculpted, creating a breathtaking sight. The location is where the romantic cycling scene from the movie "Secret" was filmed. The gentle breeze rustles through the casuarina forest, harmonizing with the deep blue sea, creating a picturesque view that attracts couples as well as families. Take a stroll along the circular trail following the unique peninsula terrain. At sunset, the golden hues of the sun's afterglow are especially enchanting.

**2 Baisha Bay Recreation Area & Gelidium Jelly**  
 Xia Yuanheng, Demao Village, Shimen District (at the 23-km mark of Provincial Highway No. 2)

Gazing out at the vast sea is the best stress-reliever. The crescent-shaped bay formed by Linshan Cape and Fugui Cape boasts unique terrain and fine-grained sand. During the summer, the waves are relatively calm, making it ideal for water-based activities. Strolling on the fine, pristine shell sand is both pleasing and soothing. Additionally, there is a mysterious lake trail nearby to explore. Furthermore, the locally produced gelidium jelly is a one-of-a-kind treat. Made from harvested gelidium that grows on coastal reefs and rocks, it undergoes sun drying, boiling, and cooling to become a refreshing and unique summer treat.

**3 Fuji Fishing Harbor & Freshly Caught Seafood**  
 Fuji Village, Shimen District (at the 25-km mark of Provincial Highway No. 2, towards Fuji Fishing Harbor)

Upon spotting a unique sombrero-shaped structure when cruising along the North Coast, you've reached Fuji Fishing Harbor. Originally a small fishing port catering to local needs, it gained fame due to its abundant flower crabs and its proximity to Taipei. It has transformed into a bright and spacious popular fishing harbor. In addition to crabs, you can find a variety of freshly caught seafood such as fish, lobsters, octopus, clams, and more. Many surrounding shops offer cooking services for customers, transforming fresh ingredients into mouthwatering dishes. This is a must-visit place for seafood enthusiasts.

**4 Fugui Cape Park**  
 Fuji Village, Shimen District (at the 25-km mark of Provincial Highway No. 2, towards Fuji Fishing Harbor)

The lighthouse, originally named Fugui Cape Lighthouse, is located at the northernmost tip of Taiwan. With a century-long history, it is one of Taiwan's four extreme points and a must-visit landmark. Its distinct black-and-white appearance stands out, and during certain seasons at sunset, you can even capture the spectacle of "lighthouse in the sun". The lighthouse can be accessed via the Fugui Cape Lighthouse Trail built along the coastline. In addition to being connected to Fuji Fishing Harbor and Fugui Cape Park on each end, this area also serves as the starting point of the Wanta Bike Trail. Inside the recreational area, there is a unique brick-wall maze and wind-pruned trees, which attract photography enthusiasts and social media influencers to visit.

**5 Laomei Green Reef**  
 Coastline of Laomei Community, Shimen District

Laomei Green Reef consists of volcanic rock suitable for algae to attach and grow on. After the algae die, their remnants harden into a thin layer of limestone, on which new algae continue to grow on, creating a continuous life cycle that forms this beautiful algal reef. The Green Reef was once voted by CNN as one of Taiwan's eight hidden treasures. From March to May, when the northeast monsoon weakens, the reef is covered in lush green seaweed, a color which resembles matcha. By June, intense sunlight causes the algae to lose moisture, and this short-lived stunning sight disappears, creating a limited-time dreamlike spectacle that attracts countless visitors for photo taking.

**6 Shimen (Stone) Arch**  
 Located at the 28.7-km mark of Provincial Highway No. 2

Shimen Arch is located at the 28.7-km mark of Provincial Highway No. 2. The area's name "Shimen" derives from this uniquely shaped natural wonder. It is also the most iconic and popular spot for photography in the area. Formed by coastal erosion of volcanic sedimentary rock and the uplift of the Earth's crust, the arch-shaped rock stands as the largest of its kind in Taiwan, reaching 10 meters in height. The pathway and viewing platforms along the coastline offer an expansive and captivating view. This area is also an important route for ecological exploration. The clear water and tidal movements, allow for a close-up look of the diverse ecosystem at the tidal pool, making it an ideal destination for family outings.

### Mountain Line Travel Through Lush Mountains and Clear Waters

**7 Fufu Dingshan Temple (Shell Temple)**  
 No. 99, Kanzhijiao Road, Shimen District

The temple primarily worships Ji Gong the Living Buddha, the Eighteen Arhats, and the Holy Mother Mazu. The "Coral Shell Tunnel" is famous for resembling the Undersea Dragon Palace. Standing in front of the temple plaza, one can enjoy an endless view of the deep blue sea. Upon entering the temple, one can admire the unique architecture decorated with hundreds of corals and thousands of shells on its walls, beams, and ornaments. The temple exudes a solemn, splendid, and romantic atmosphere. Besides the temple's architectural beauty, one can also visit the largest coral tunnel in Taiwan, which has become a dream-like attraction for those who wish to stroll through to feel as if underwater.

**9 Songshan Community - Century-old Terraced Fields and Countryside Experiences**  
 Route N. 19, Shimen District

Strolling through Songshan, the winding layers of terraced fields nestled against the mountains, interwoven with irrigation channels and embankments, create a geometric landscape that captivates visitors. The nearly 41-hectare terraced fields are a testament to the wisdom of the island's ancestors, transforming topographical disadvantages into advantages by sculpting local igneous rocks. These rocks were stacked to form one of Taiwan's rare stone-built terraced fields. The trailheads of Jiashan Lake Trail and Qingshan Waterfall Trail are only 1 kilometer apart and together form a circular route. The Jiashan Lake Monument, originally a Shinto shrine erected by Japanese authorities during the colonial era to commemorate an officer who died in a plane crash, was repurposed into a trail after the Japanese withdrew after WW2. The trail invites visitors to experience local ecology and reflect on the preciousness of peace.

**8 Qingshan Waterfall Trail**  
 Route N. 17, Shimen District

Qingshan Waterfall is located on the upper reaches of the Laomei River, in the Jiashan Lake area, and was formerly known as "Jiashan Lake Waterfall." The trail includes three sections of different difficulty levels. After passing through the waterfall observation deck, there's a steep uphill slope challenging visitors who wish to proceed. Following the path along the Kandiliao Irrigation Channel will lead you to the Laomei River, through a forest of unique trees, ferns, and more. Eventually, you'll arrive at the Qingshan Waterfall on the upper reaches of the Laomei River. The towering Mount Zhuzi collects water within its watershed, which flows through the faulted valley with significant elevation drop, forming a splendid mountainous landscape.

**10 Chashan Mountain Trail & Tieguanyin**  
 Caopuwei, Shimen District

Known as "Tea Town," Shimen boasts the largest tea production area in the North Coast region. Even during the Japanese colonial period, the "Alibang Black Tea," a firm-stem red-tip variety, was already a widely known tea variety. In recent years, the famous North Coast "Shimen Tieguanyin" tea has gained popularity. It is known for its rich fragrance and sweet aftertaste. Entering Route N 21 across from the fishing paradise "Caoli Fishing Harbor," the Tea Mountain Trail comes into view after a winding journey. In just 1 kilometer, you can appreciate the beauty of bamboo forests and lush tea gardens. Along the way, there are interpretive signage introducing tea tree names and characteristics. At the end of the trail, there's an elevated viewpoint that offers panoramic vistas. Whether on a clear day gazing at distant ridges or in rainy weather with swirling clouds, the landscape always offers captivating scenery.

### Leisurely Day Trips

#### Countryside Farm Fun

- Qingshan Waterfall
- Songshan Community's Century-old Terraced Fields
- Chuhuankou Farm Activities (rustic cuisine and ecological tour)
- Fuji Fishing Harbor (sunset and dinner)

#### Tea Picking in the Tea Mountain

- Chashan Mountain Trail
- Caoli Tea Factory (Tea Picking and Tea-making Experience)
- Lunch at Western Cafe
- Shimen Cave Park (Right) and Fugui Cape Lighthouse
- Fuji Fishing Harbor (sunset and dinner)

#### Wind Chasing, Wave Riding & Sunset Watching

- Laomei Green Rock Trough
- Laomei Maze
- Fugui Cape Lighthouse
- Fuji Fishing Harbor (Lunch)
- Shimen Wedding Plaza
- Baisha Bay Recreation Area
- Linshan Cape Recreation Area (unique rocks and beautiful sunset)

#### Hidden Paradise for Seafood Tasting

- Shimen Cave Park
- Windmill Park (Shimen Wind Power Station)
- Lunch at Shimen Restaurant
- Chashan Mountain Trail
- Golden Point Caoli Station (local cuisine and fishing)

### Transportation Guide Map & Information



- 1 Zhongshan Freeway Taipei Interchange
- 2 Formosa Freeway Chijin Interchange

#### For Drivers

- For those coming from Guandu or Tamsui, take Provincial Highway No. 2 and pass through Sanzhi District to Shimen.
- For those coming from Keelung, take Provincial Highway No. 2 and pass through Wanli and Jinshan to Shimen.
- For those from Taipei City, take Provincial Highway No. 2A, pass through Yangmingshan to Jinshan, then switch to Provincial Highway No. 2 to Shimen.

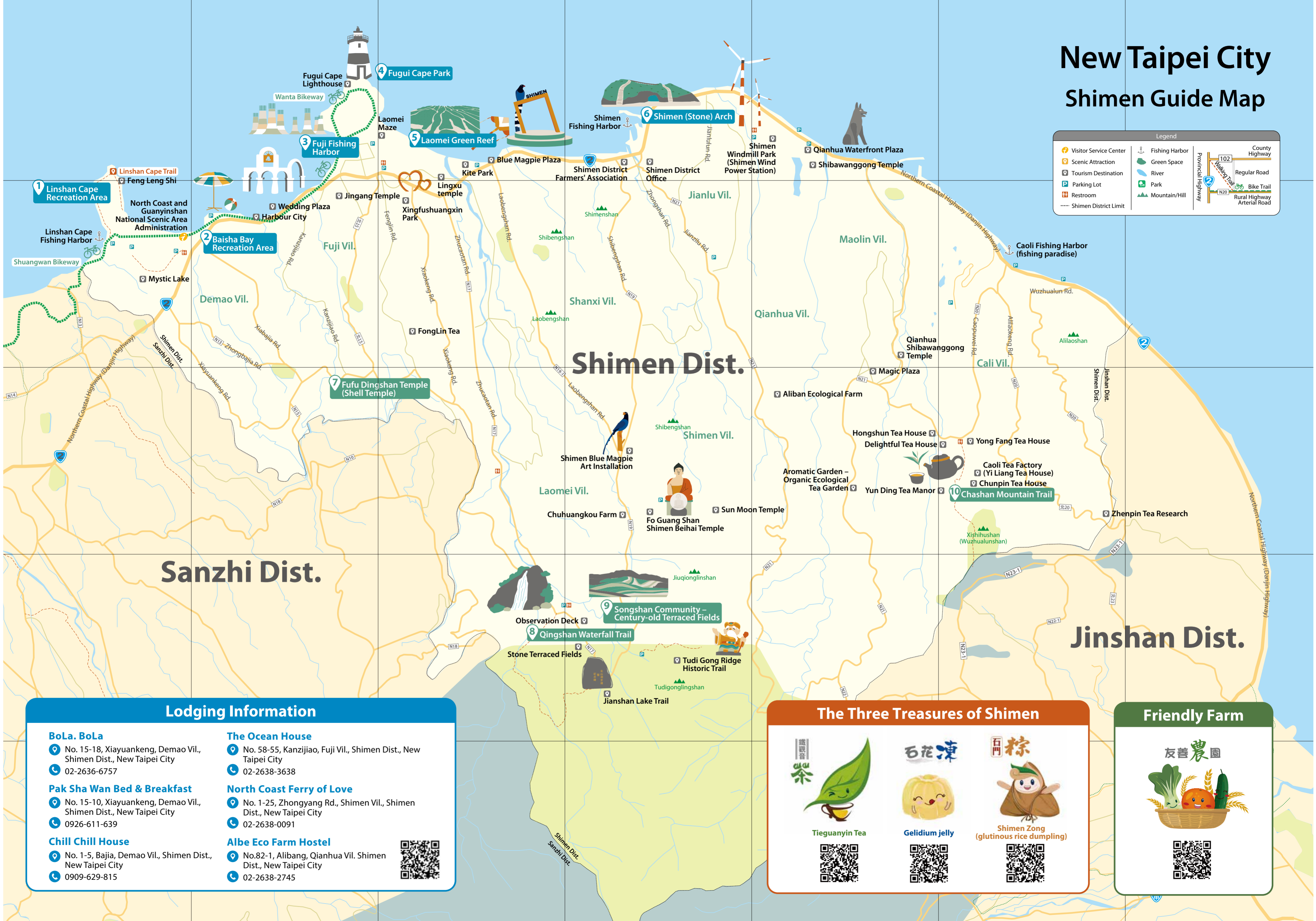
#### For Bus Travelers

- By MRT: Get off at Tamsui MRT Station and transfer at the bus stop either by the station or by the CPC gas station. Take the Tamsui Bus (Jinshan to Tamsui) or Keelung Bus (Keelung to Tamsui) to Shimen.
- Coming from Keelung or Jinshan direction by bus: Take the Keelung Bus (Keelung to Tamsui) or Tamsui Bus (Jinshan to Tamsui) to Shimen.

Contact Numbers for Agencies within Shimen District Office

# New Taipei City Shimen Guide Map

**Legend**

### Lodging Information

<p><b>BoLa. BoLa</b></p> <ul style="list-style-type: none"> <li>No. 15-18, Xiayunkeng, Demao Vil., Shimen Dist., New Taipei City</li> <li>02-2636-6757</li> </ul> <p><b>Pak Sha Wan Bed &amp; Breakfast</b></p> <ul style="list-style-type: none"> <li>No. 15-10, Xiayunkeng, Demao Vil., Shimen Dist., New Taipei City</li> <li>0926-611-639</li> </ul> <p><b>Chill Chill House</b></p> <ul style="list-style-type: none"> <li>No. 1-5, Bajia, Demao Vil., Shimen Dist., New Taipei City</li> <li>0909-629-815</li> </ul>	<p><b>The Ocean House</b></p> <ul style="list-style-type: none"> <li>No. 58-55, Kanzhijiao, Fuji Vil., Shimen Dist., New Taipei City</li> <li>02-2638-3638</li> </ul> <p><b>North Coast Ferry of Love</b></p> <ul style="list-style-type: none"> <li>No. 1-25, Zhongyang Rd., Shimen Vil., Shimen Dist., New Taipei City</li> <li>02-2638-0091</li> </ul> <p><b>Albe Eco Farm Hostel</b></p> <ul style="list-style-type: none"> <li>No.82-1, Alibang, Qianhua Vil. Shimen Dist., New Taipei City</li> <li>02-2638-2745</li> </ul>
--	---



### The Three Treasures of Shimen

 <p><b>Tieguanyin Tea</b></p> 	 <p><b>Gelidium jelly</b></p> 	 <p><b>Shimen Zongzi (glutinous rice dumpling)</b></p> 
--	--	---

### Friendly Farm

友善農園